

AQRP Project 14-022

Use of Satellite Data to Improve Specifications of Land Surface Parameters

By

Richard T. McNider, Kevin Doty and Yu Ling Wu,
ESSC

University of Alabama – Huntsville

And

Pius Lee

NOAA Air Resources Laboratory

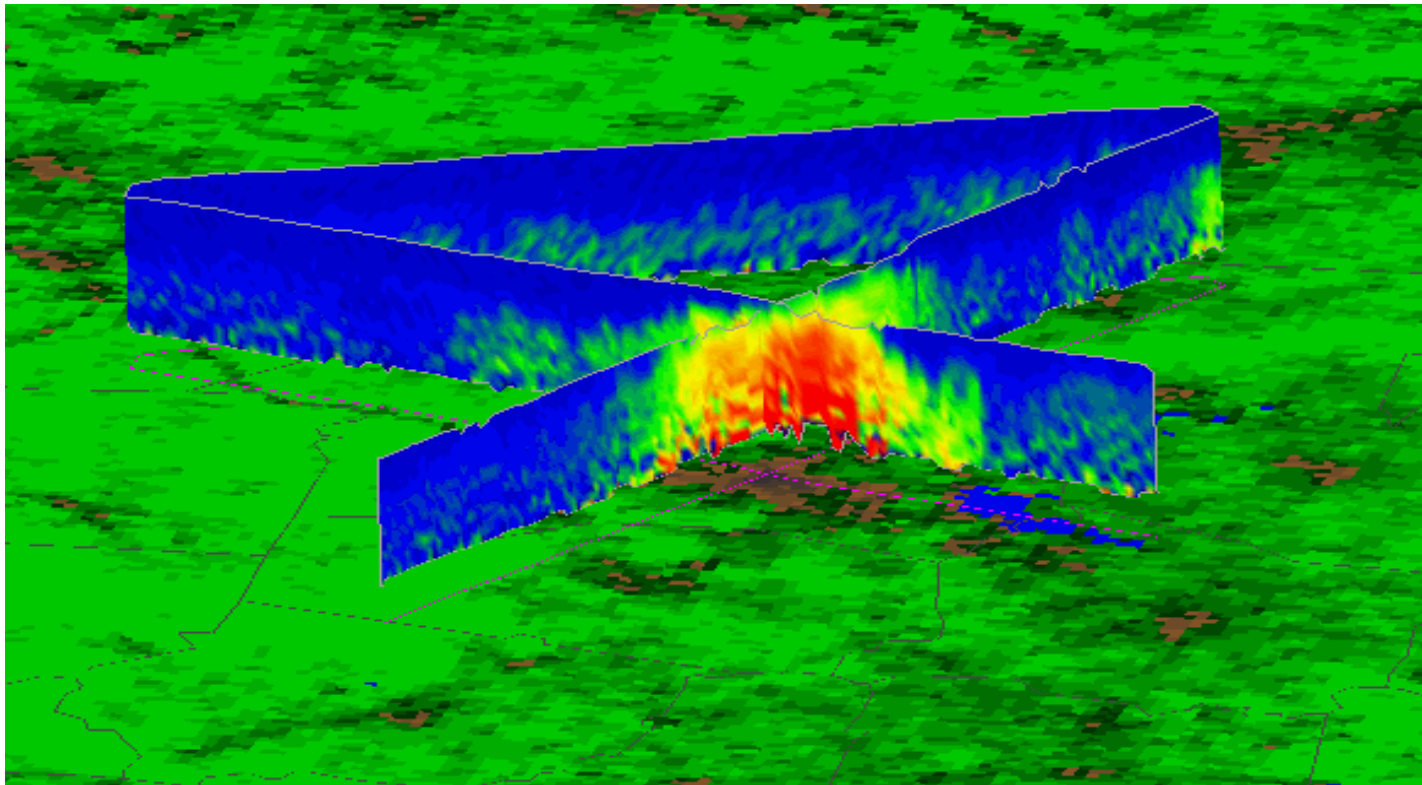
Min Huang

George Mason University

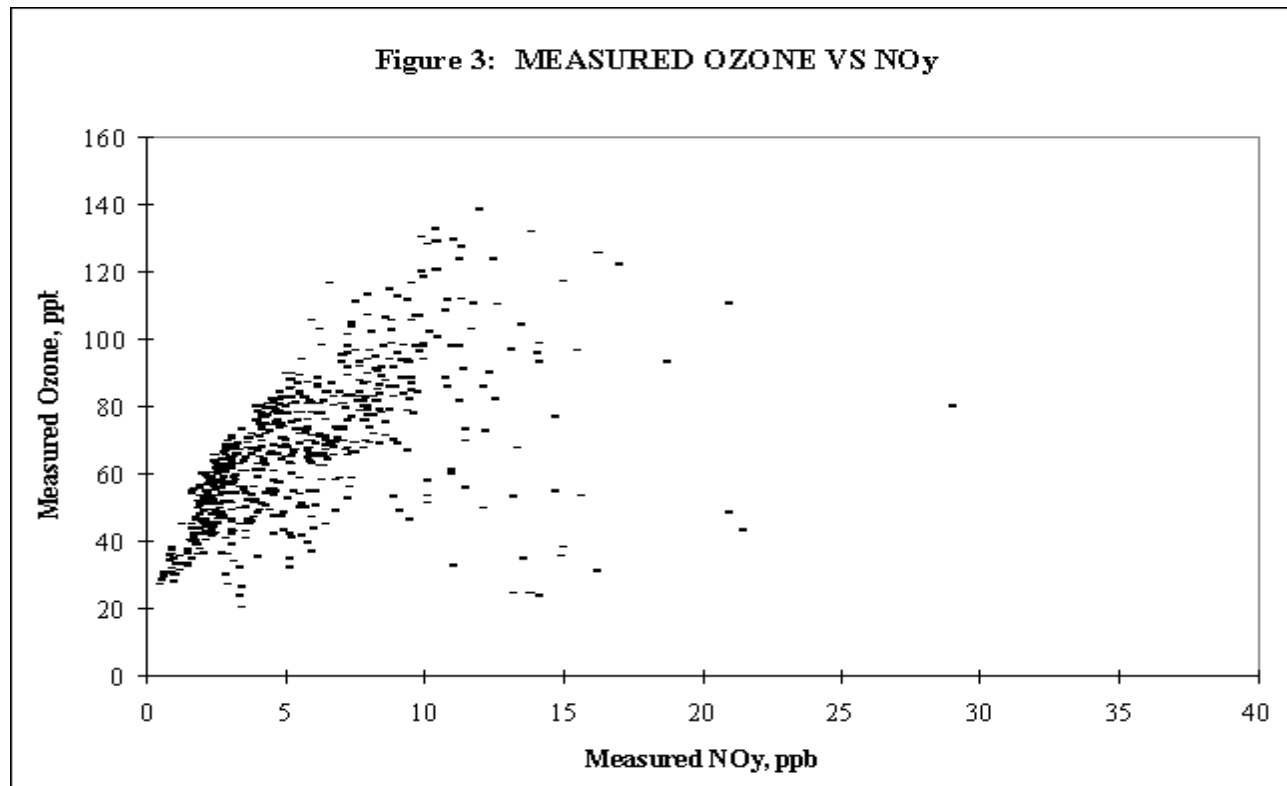


- **Specifying surface characteristics which impact temperature, moisture and boundary layer dynamics are critical to air quality modeling.**
- **Also critical to efficacy and efficiency of control strategy**

Mixing Heights – Underestimate of mixing heights can cause an over-estimate of the sensitivity of controls. Emission reductions confined to a smaller volume cause a larger reduction in ozone. A 30% error in mixing heights can produce 30% error in emission change impacts



Temperature – over prediction of temperature can bias ozone controls toward NO_x controls as thermal decomposition of increases slope of ozone/NO_y curves.



Biogenic VOC and anthropogenic evaporative emissions are a strong function of temperature

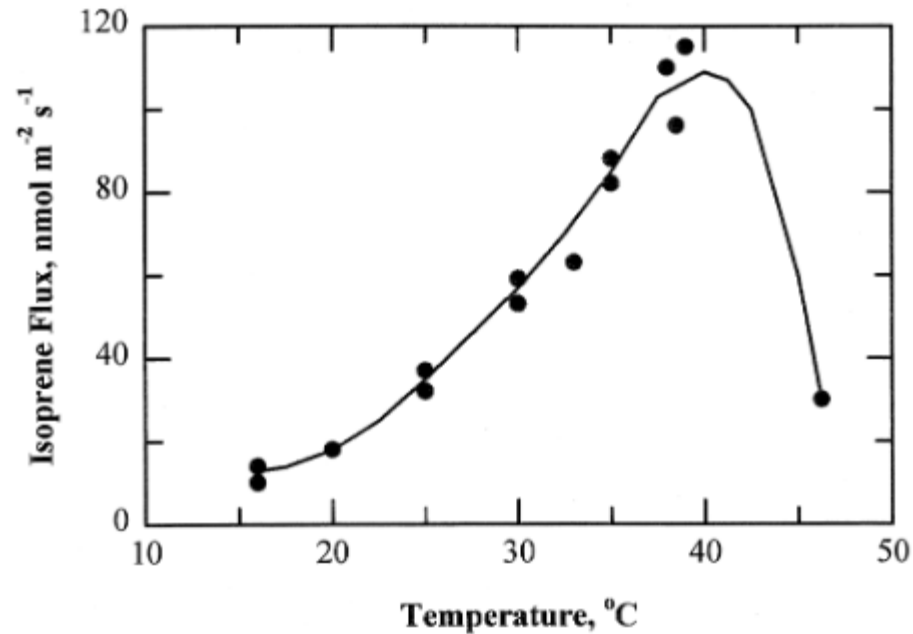


FIG. 4. Isoprene emissions in functions of leaf temperature for white oak (*Quercus alba*) leaves. Fluxes are expressed per unit leaf area.

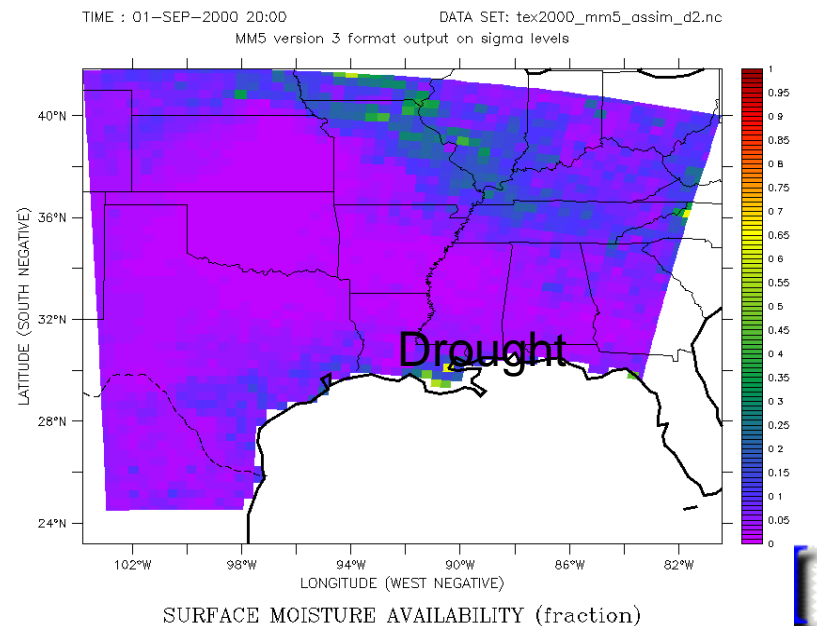
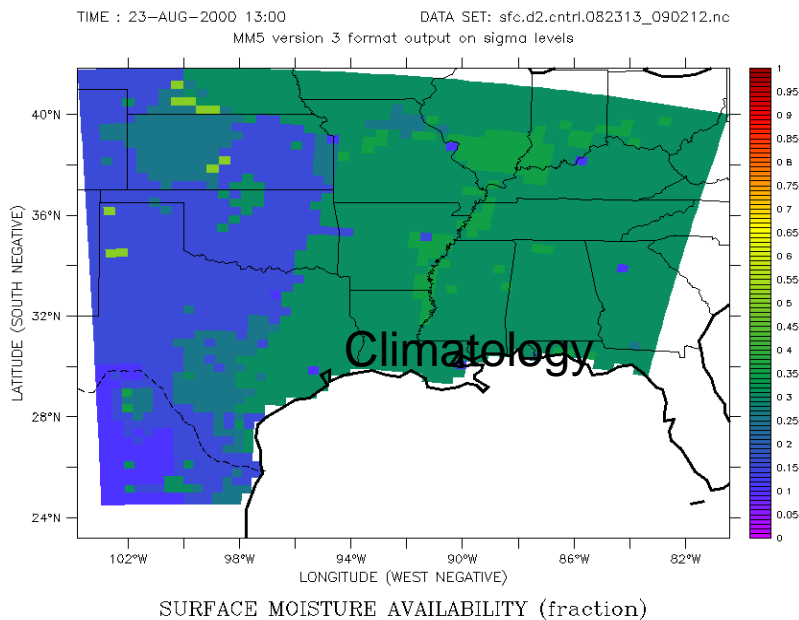
from Fuentes et al BAMS 2000

Moisture

Soil moisture impacts NO_x emissions.

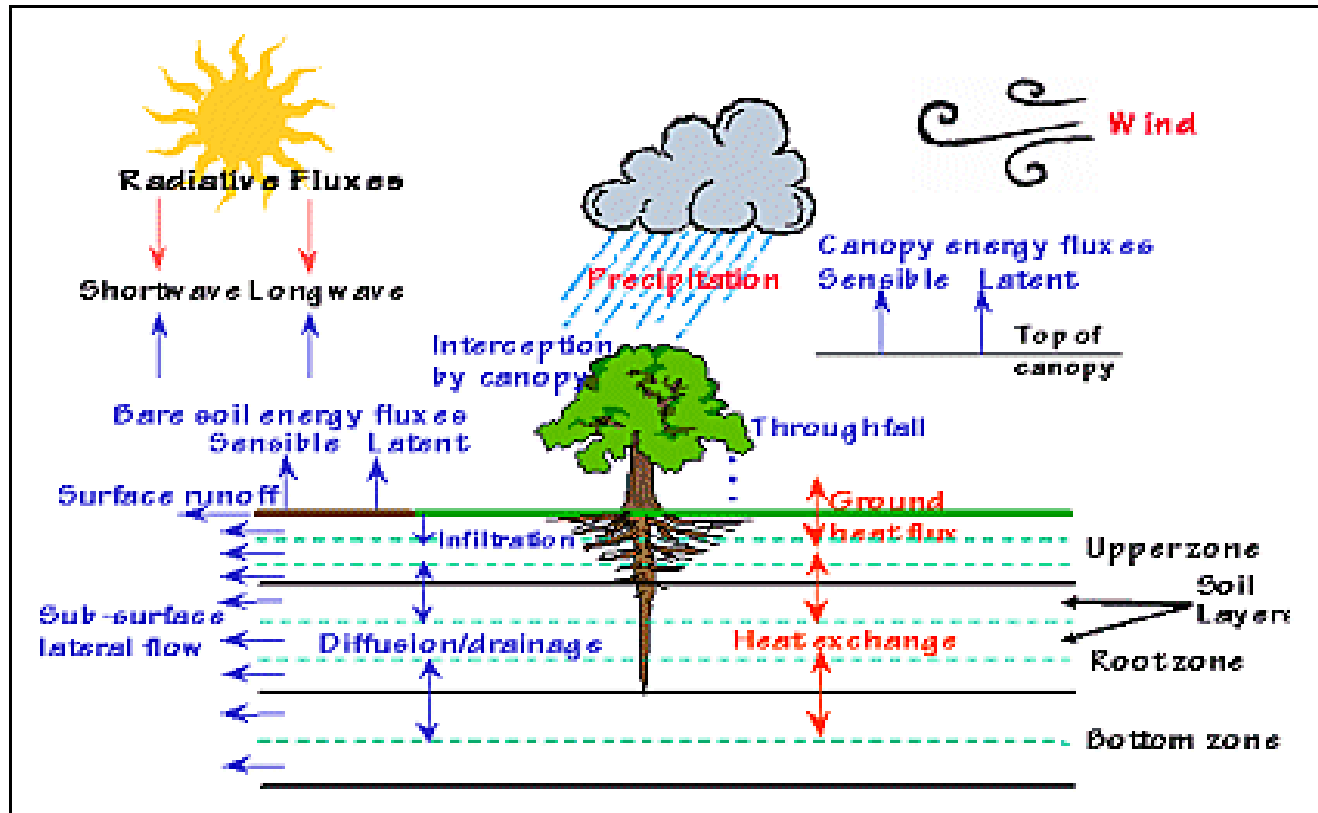
Atmospheric moisture can impact dry chemistry and wet chemistry.

Pollutant uptake by plants is directly related to photosynthesis and transpiration. Under-estimation of moisture and associated surface loss can overestimate the role of long range transport in local air pollution levels.



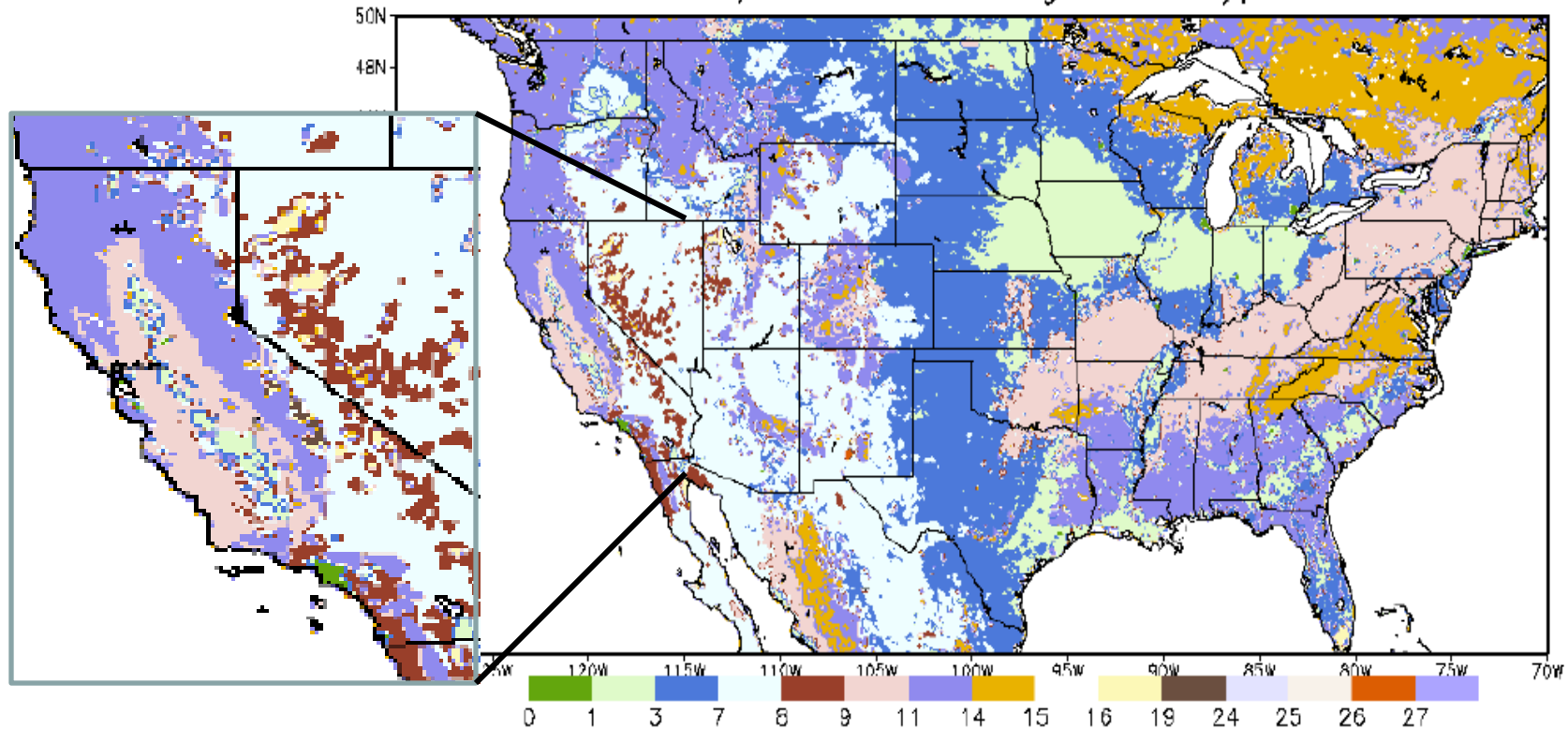
Temperature and Moisture Modeling

Factors controlling surface temperatures and moisture are complex and many models have created complex land surface models that in the end require many ill defined parameters.



Models have attempted to improve performance by developing improved land use classes (LUC) using in situ and satellite data

USGS/EROS 1 km Vegetation Type



- 1: Urban and Built-Up Land
- 2: Dryland Cropland and Pasture
- 3: Irrigated Cropland and Pasture
- 4: Mixed Dryland/Irrigated Cropland
- 5: Cropland/Grassland Mosaic
- 6: Cropland/Woodland Mosaic
- 7: Grassland
- 8: Shrubland
- 9: Mixed Shrubland/Grassland
- 10: Savanna
- 11: Deciduous Broadleaf
- 12: Deciduous Needleleaf
- 13: Evergreen Broadleaf
- 14: Evergreen Needleleaf
- 15: Mixed Forest
- 16: water
- 17: Herbaceous Wetland
- 18: Wooded Wetland
- 19: Barren
- 20: Herbaceous Tundra
- 21: Wooded Tundra
- 22: Mixed Tundra
- 23: Bare Ground Tundra
- 24: Snow or Ice
- 25: Playa
- 26: Lava
- 27: White Sand

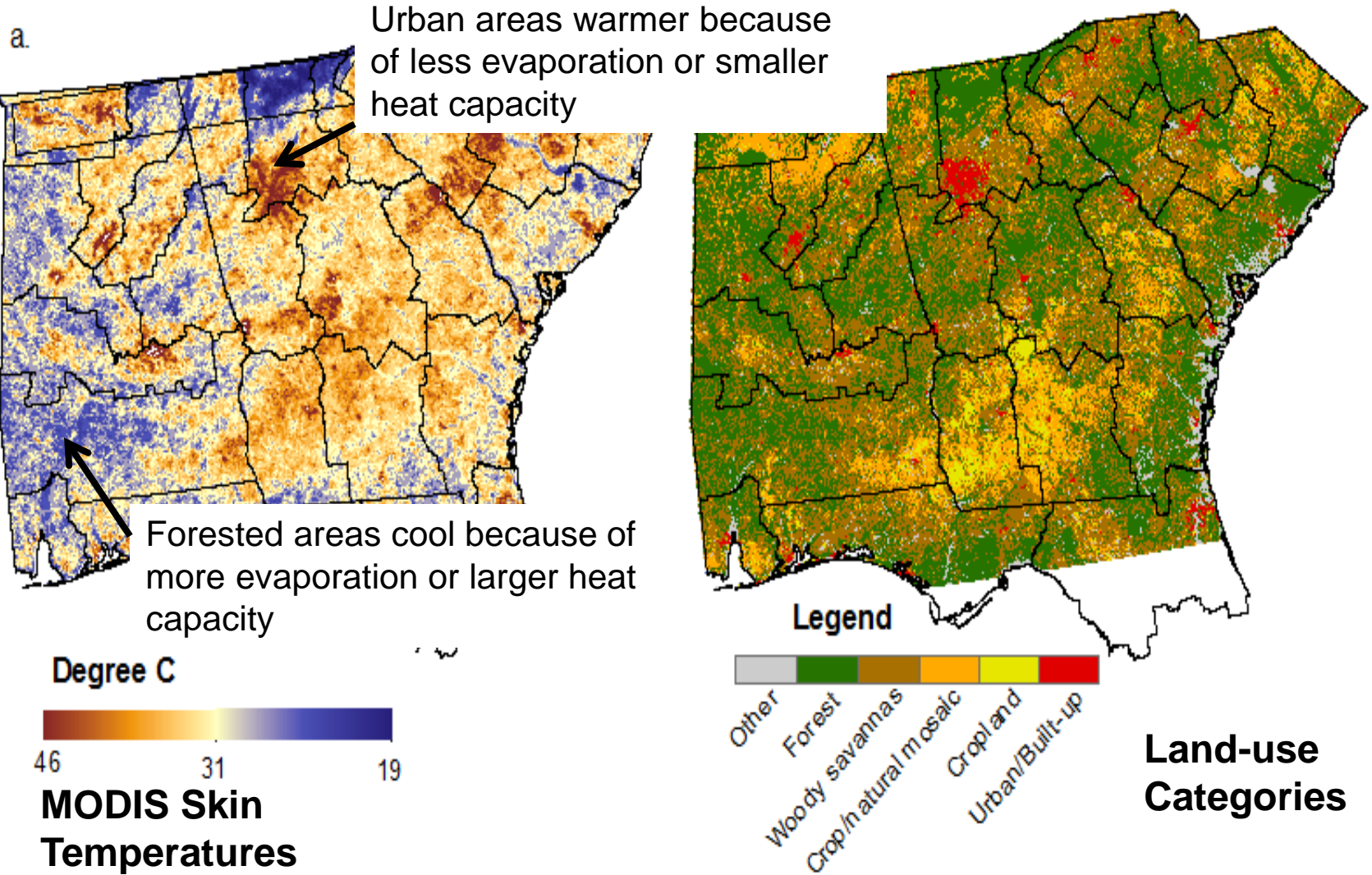
Unfortunately models don't use land surface classes directly. Physical parameters such as heat capacity, canopy resistance, surface moisture have to be defined for the Land Use Class

Albedo - SFC albedo (in percentage)	RGL - Parameter used in radiation stress function
Z0 - Roughness Length (m)	HS - Parameter used in vapor pressure deficit
SHDFAC - Green vegetation fraction	SNUP - Threshold depth for 100% snow cover
NROOT - Number of root layers	LAI - Leaf area index (dimensionless)
RS - stomatal resistance (s m-1)	MAXALB - Upper bound on max albedo snow

Vegetation Parameters

Category	Class	Albedo	Z0	SHDFAC	NROOT	RS	RGL	HS	SNUP	LAI	MAXALB
Urban and Built-Up Land	1	0.15	1.00	0.10	1	200.	999.	999.0	0.04	4	40
Dryland Cropland and Pasture	2	0.19	0.07	0.80	3	40.	100.	36.25	0.04	4	64
Irrigated Cropland and Pasture	3	0.15	0.07	0.80	3	40.	100.	36.25	0.04	4	64
Mixed Dryland/Irrigated Cropland and Pasture	4	0.17	0.07	0.80	3	40.	100.	36.25	0.04	4	64
Cropland/Grassland Mosaic	5	0.19	0.07	0.80	3	40.	100.	36.25	0.04	4	64
Cropland/Woodland Mosaic	6	0.19	0.15	0.80	3	70.	65.	44.14	0.04	4	60
Grassland	7	0.19	0.08	0.80	3	40.	100.	36.35	0.04	4	64
Shrubland	8	0.25	0.03	0.70	3	300.	100.	42.00	0.03	4	69
Mixed Shrubland/Grassland	9	0.23	0.05	0.70	3	170.	100.	39.18	0.035	4	67
Savanna	10	0.20	0.86	0.50	3	70.	65.	54.53	0.04	4	45
Deciduous Broadleaf Forest	11	0.12	0.80	0.80	4	100.	30.	54.53	0.08	4	58
Deciduous Needleleaf Forest	12	0.11	0.85	0.70	4	150.	30.	47.35	0.08	4	54
Evergreen Broadleaf Forest	13	0.11	2.65	0.95	4	150.	30.	41.69	0.08	4	32
Evergreen Needleleaf Forest	14	0.10	1.09	0.70	4	125.	30.	47.35	0.08	4	52
Mixed Forest	15	0.12	0.80	0.80	4	125.	30.	51.93	0.08	4	53
Water Bodies	16	0.19	0.001	0.00	0	100.	30.	51.75	0.01	4	70
Herbaceous Wetland	17	0.12	0.04	0.60	2	40.	100	60.00	0.01	4	35
Wooded Wetland	18	0.12	0.05	0.60	2	100.	30.	51.93	0.02	4	30
Barren and Sparsely Vegetated	19	0.12	0.01	0.01	1	999.	999.	999.0	0.02	4	69
Herbaceous Tundra	20	0.16	0.04	0.60	3	150.	100.	42.00	0.025	4	58
Wooded Tundra	21	0.16	0.06	0.60	3	150.	100.	42.00	0.025	4	55
Mixed Tundra	22	0.16	0.05	0.60	3	150.	100.	42.00	0.025	4	55
Bare Ground Tundra	23	0.17	0.03	0.30	2	200.	100.	42.00	0.02	4	65
Snow or Ice	24	0.70	0.001	0.00	1	999.	999.	999.0	0.02	4	75

Can we perhaps use satellite observed skin temperatures to specify parameters in land use classes so that the model in turn reproduces the observed skin temperatures



From Ellenburg 2015



Climate models must use complex models for energy and water balance models to run unattended for years.

In weather forecasting and air pollution applications the better approach may be to use simple models highly constrained by observations.

This may be especially true for retrospective studies such as SIP periods.

Examples

McNider et al 1994 MWR Moisture adjustment using satellite time tendency data

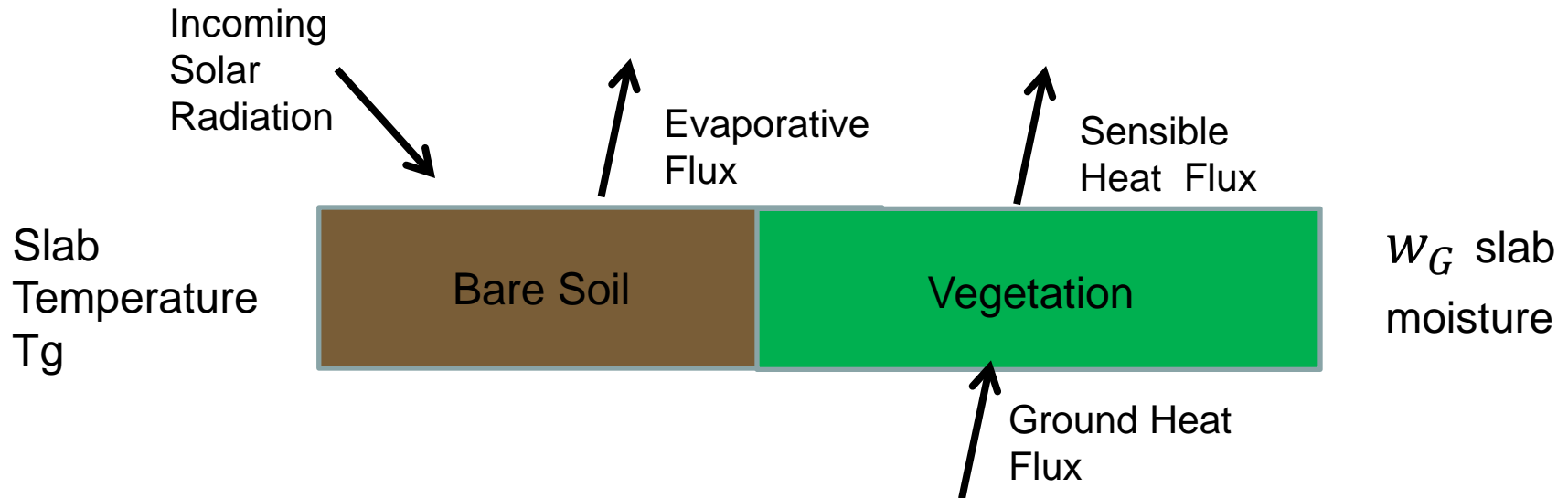
Anderson et al 1997(ALEXI) JAM moisture adjustment using satellite data

Pleim and Xiu 2003 JAM Moisture adjustment using surface obs

McNider et al 2005 JCAM Heat capacity/thermal inertia adjustment.



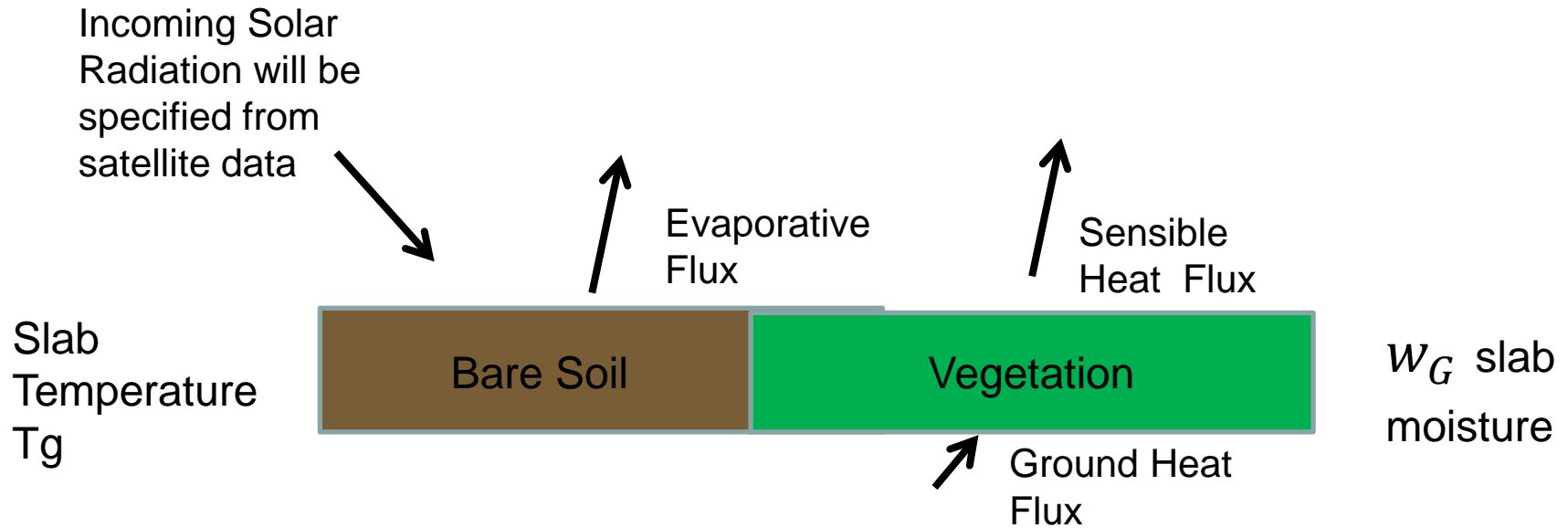
We have taken a different approach and have embraced simple models but highly constrained by observations. Simple model is based on the Pleim-Xiu scheme in WRF.



Original Pleim-Xiu used differences between National Weather Service observations and model temperatures to nudge moisture in the proper direction.

$$\Delta w_G = \alpha_1 (T^A - T^F) + \alpha_2 (RH^A - RH^F)$$

Here we will constrain the Pleim-Xiu scheme with satellite data



We will use differences between satellite skin temperature observations and model skin temperatures to nudge moisture in the proper direction.

$$\Delta W_G = \beta_1 (T_s^{Sat} - T_s^{Mod})_{Morning}$$

We will try to use differences in the satellite and model skin to nudge the slab heat capacity C_g (thermal resistance) (McNider et al . 2005)

$$\Delta C_g = \beta_2 (T_s^{Sat} - T_s^{Mod})_{Evening}$$

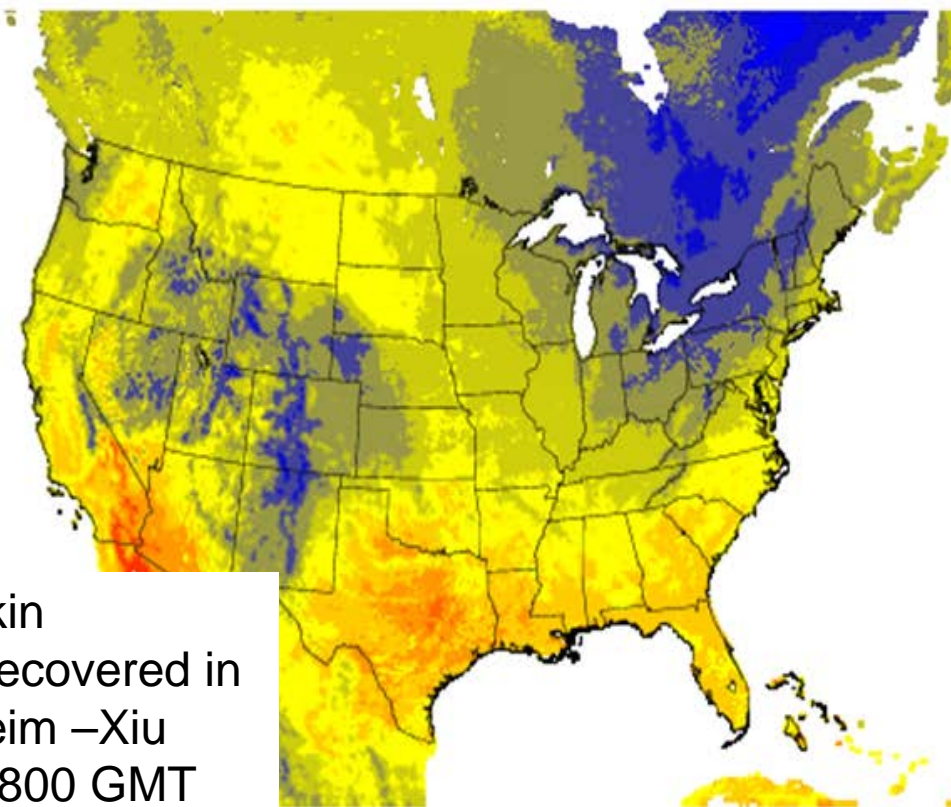
The satellite observes a skin or radiating temperature while the original Pleim-Xiu scheme only provided a slab temperature associated with a finite heat capacity - c_g

$$c_g \frac{\partial T_G}{\partial t} = R_L + (1 - \alpha_s) R_s - \varepsilon \sigma T_s^4 - H - E - G$$

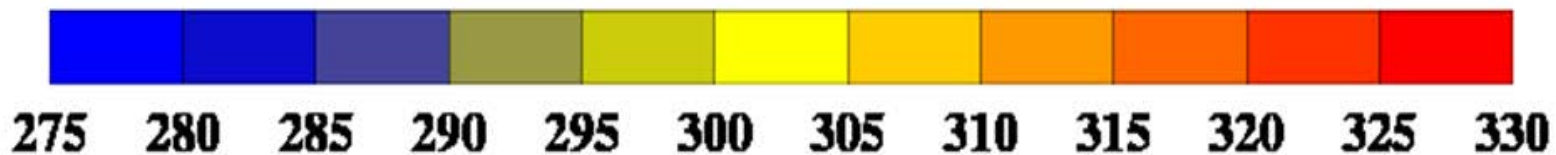
Following Makaro 2011 we take the limit of c_g approaching 0 to obtain an infinitely thin surface.

$$R_L + (1 - \alpha_s) R_s - \varepsilon \sigma T_s^4 - H - E - S = 0$$

We use root finding techniques to recover a true skin temperature, T_s .



Example of skin temperature recovered in WRF from Pleim –Xiu scheme for 1800 GMT Sept 13, 2013



The first step in using the skin temperatures from the satellite to improve moisture or heat capacity is to ensure that the surface energy budget in the model and the surface the satellite sees are being forced by the same solar forcing , R_s .

$$c_g \frac{\partial T_G}{\partial t} = R_L + (1 - \alpha_s) R_s - \varepsilon \sigma T_s^4 - H - E - G$$

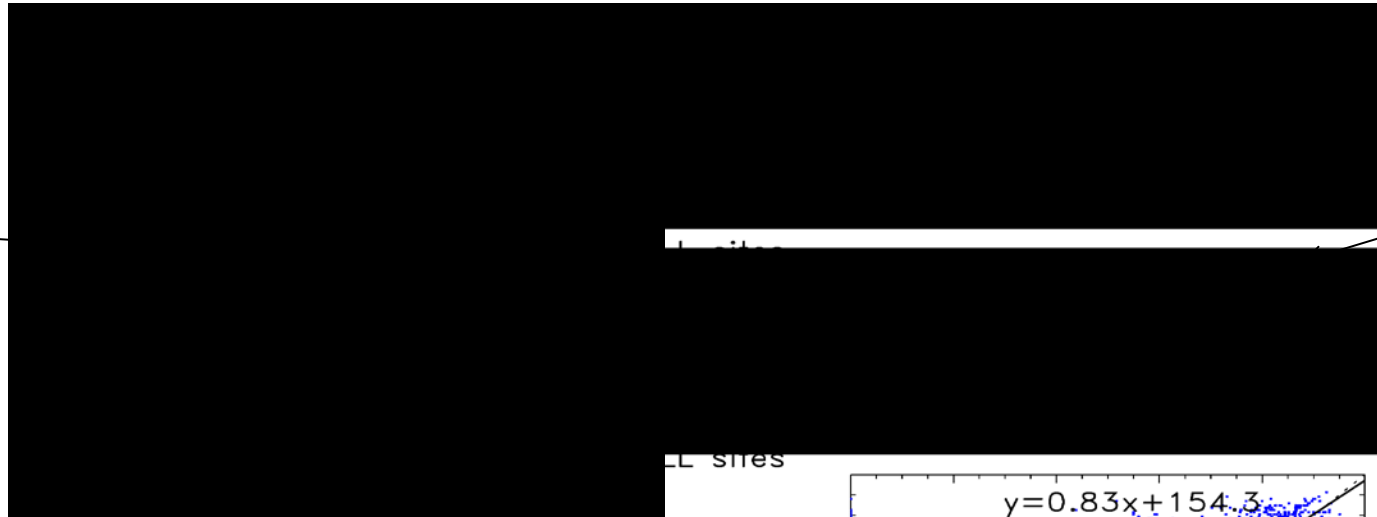
Solar insolation during the day usually the biggest term in the equation.

We use a satellite derived insolation product originally developed by Gautier and Diak 1980.

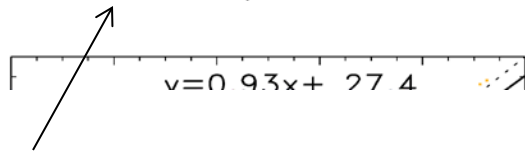
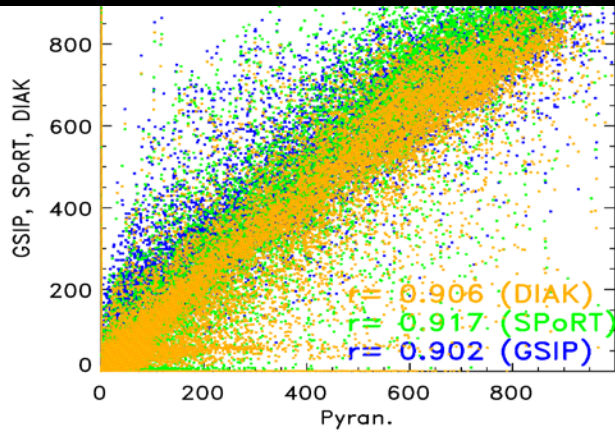
September 2013 Discovery AQ

WRF

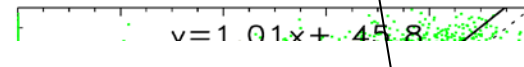
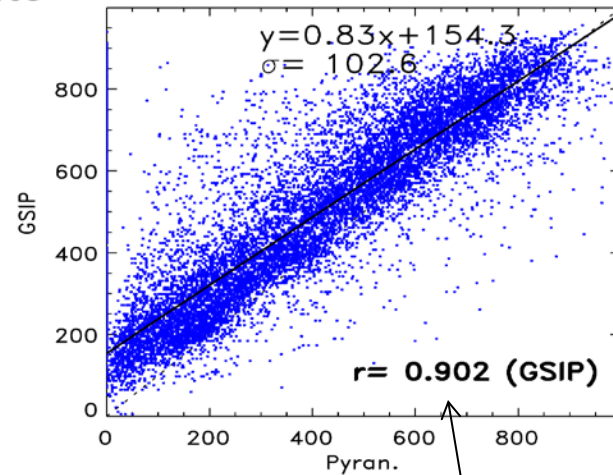
New
NOAA
Product



WRF sites

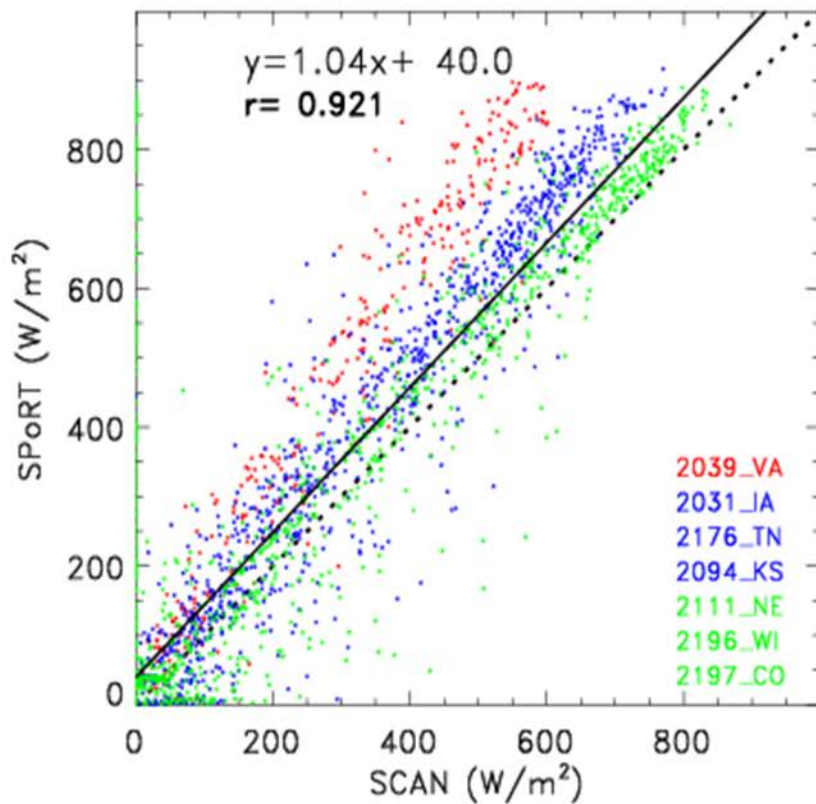


New Water Vapor Dependent Product

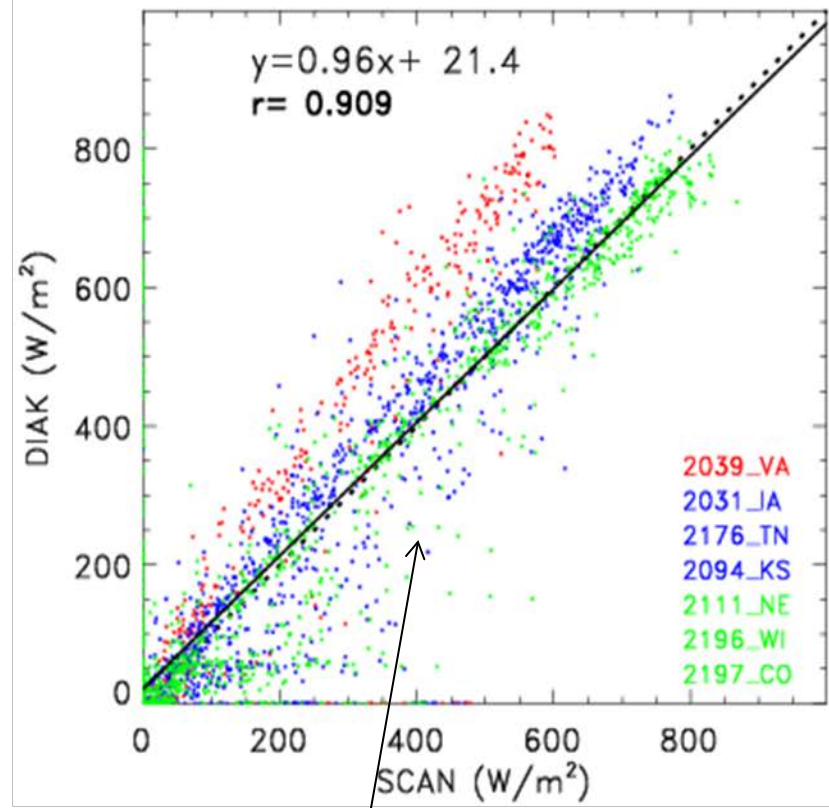


Original UAH
Product





Original UAH
Product



With variable
precipitable water

If we don't find the fundamental source of the over-prediction in the East we will use a calibration developed by Pour-Biazar under another AQRP project

The next step in the use of satellite skin is to develop satellite skin temperature products that can be used in the moisture and heat capacity nudging discussed above.

In the past our group had used a UAH/NASA skin temperature product. However, it was based on a sounder instrument and only had a resolution of 10 km or so. It also had some striping issues.

Thus, for this Texas AQRP project we had proposed to use a new NOAA GSIP skin temperature product.

While it looked good in the East we found unrealistic temperatures in the west.

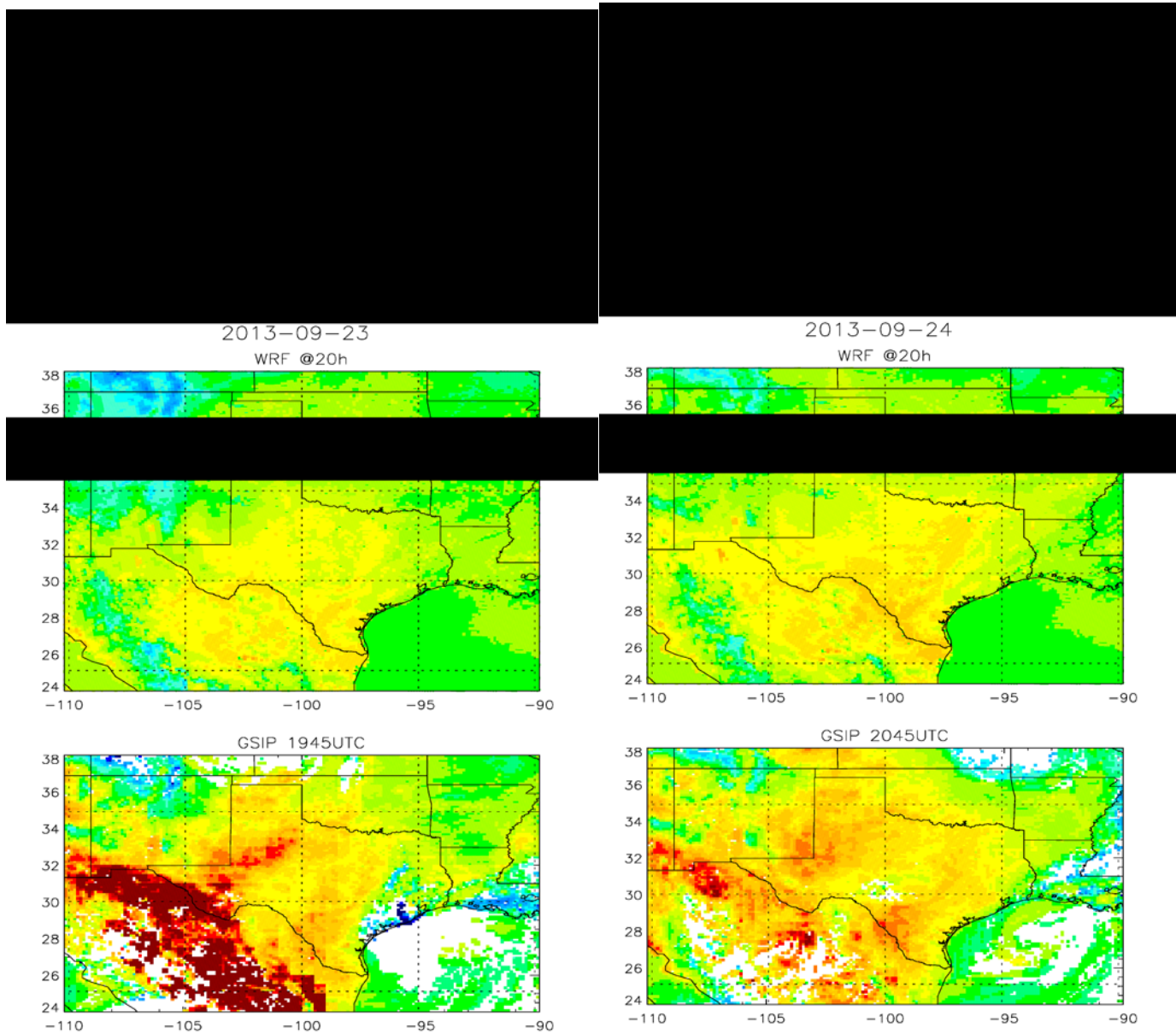
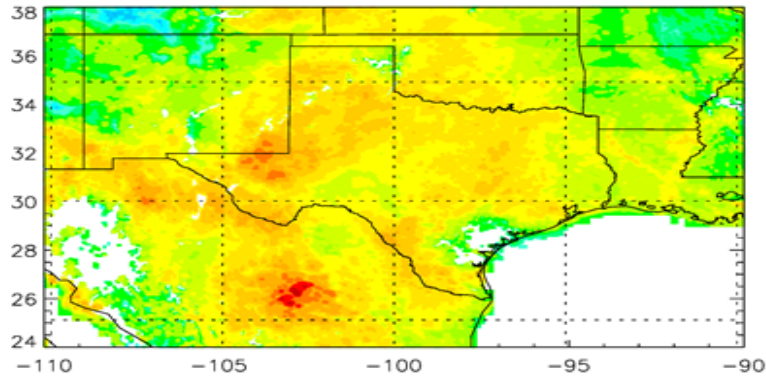


Fig. 6. Skin Temperature, from top to bottom—WRF, GSIP, and MODIS(Aqua). Left panels are for Sep 23, 2013 (Aqua overpass time was 19:45&19:50 GMT),

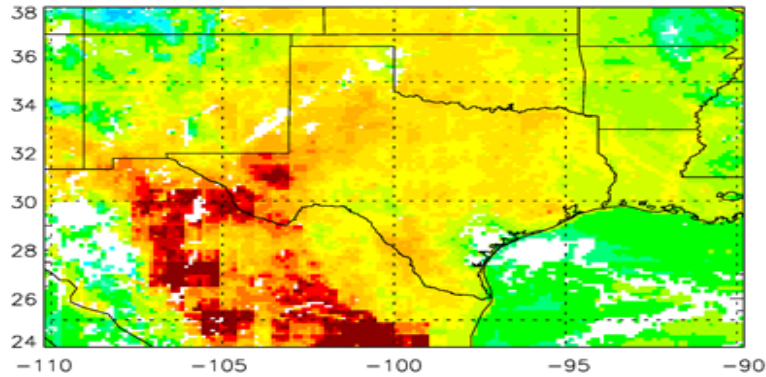
2013-09-26

NESDIS @1715



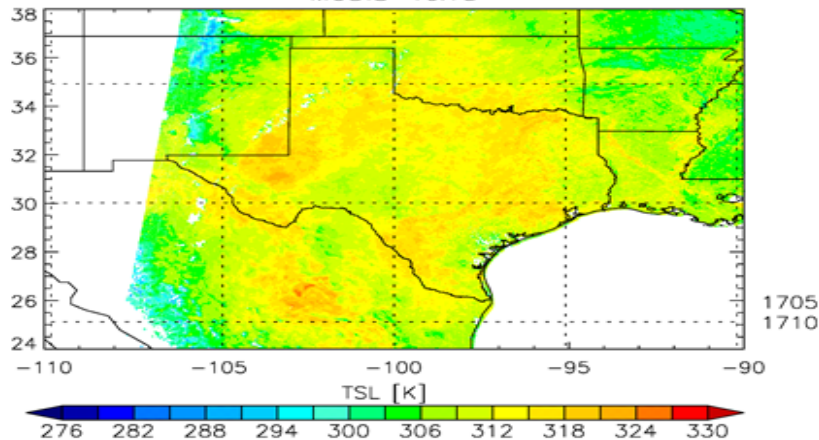
New NOAA Skin Temperature Product
Courtesy Chris Hain

GSIP 1645UTC



GSIP NOAA Skin Temperature Product

MODIS-Terra



MODIS Skin Temperature Product

The images above of skin temperatures show that while the patterns may be similar there are absolute differences in values. This is in part due to lack of IR sensor calibration on aircraft and satellites. Also, due to offsets in model skin temperatures to reality.

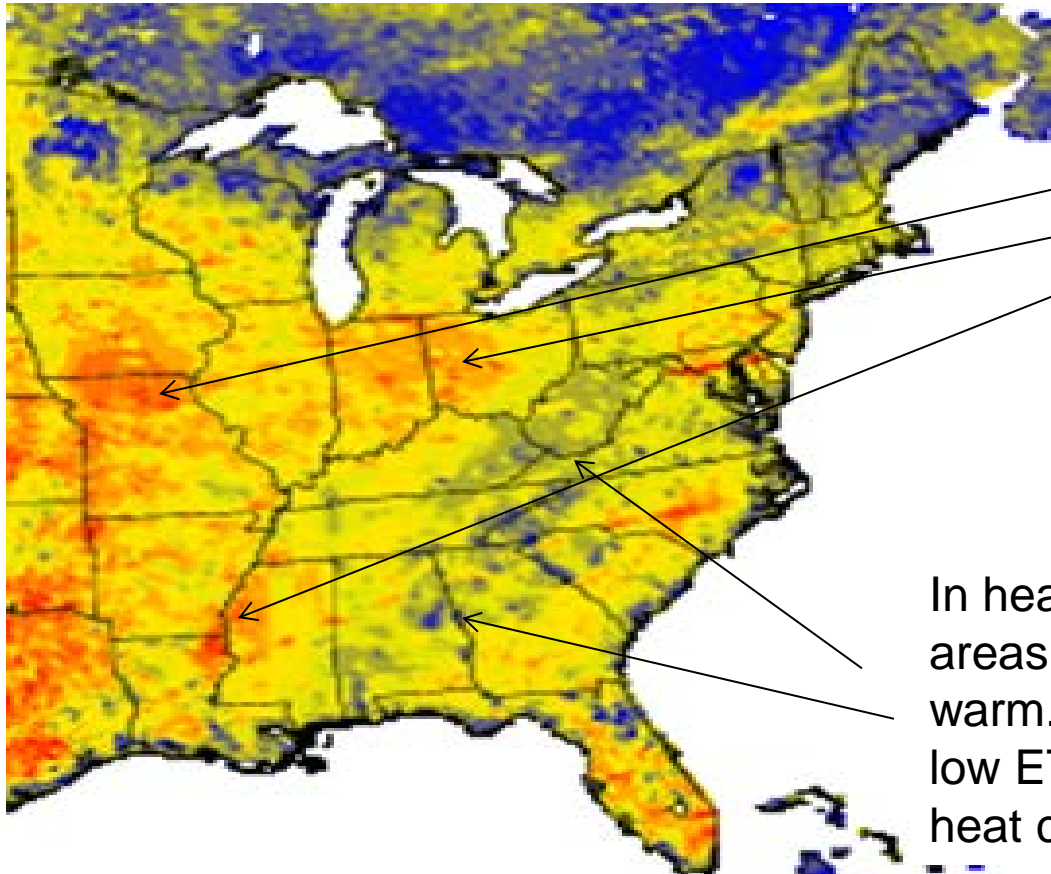
There are many papers which have attempted to directly assimilate observed skin temperatures with little success. Our group and the ALEXI group have always relied on the use of skin tendencies which avoid issues of offsets/calibration.

Under this activity we will develop a quasi-observed field tied to the model skin temperature but using observed skin temperature tendencies.

$$T_{qo}(x, y, t + \Delta t) = T_{qm}(x, y, t) + \Delta t \left(\frac{\partial T_o(x, y, t)}{\partial t} \right)$$

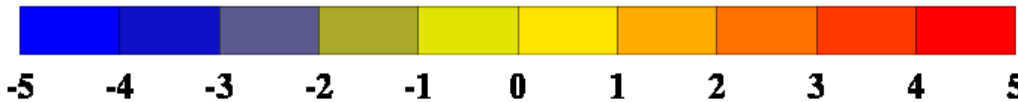
quasi-observed skin temperature model skin temperature observed skin temperature tendencies

Potential of Skin Temperature to Improve WRF Performance



In September corn has been harvested and no longer transpiring. WRF is cooler than satellite likely has too much ET or too large heat capacity

In heavily forested areas WRF is too warm. May have too low ET or too small heat capacity



Difference between GOES Skin Temperature and WRF Control

Model Test (Sept 1-Sept 30) period Includes DISCOVERY AQ
NOAA ARL is using aircraft data for model evaluation

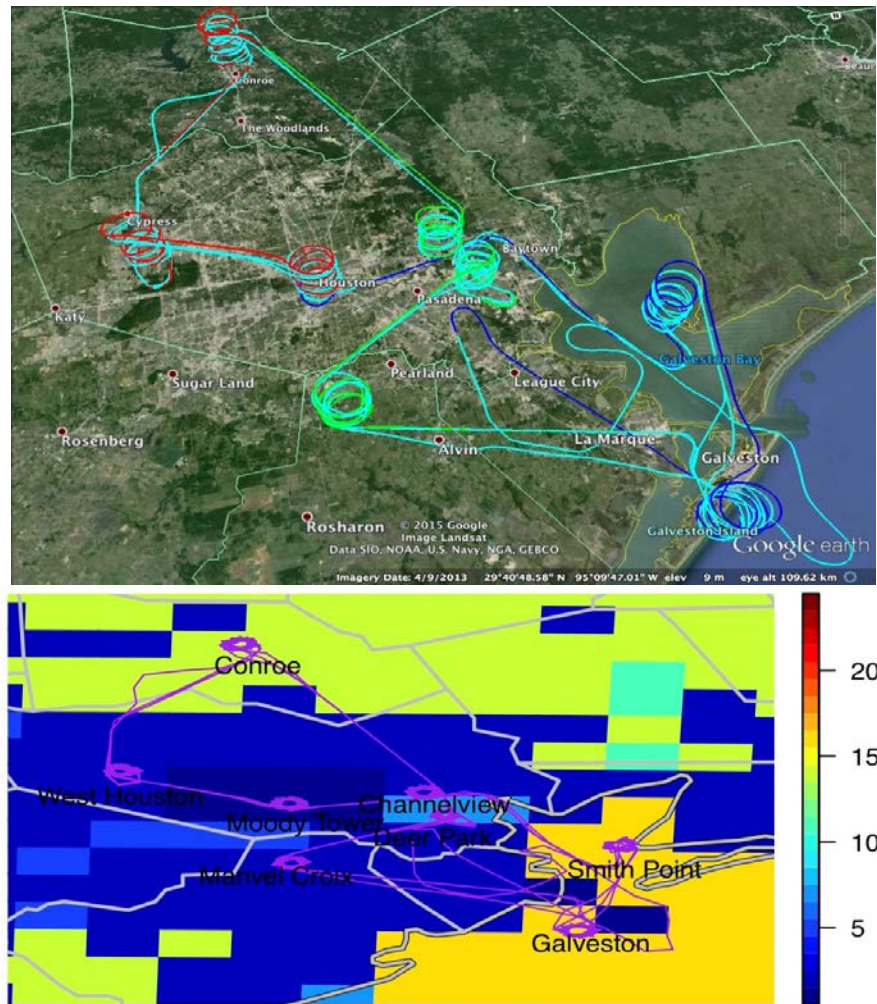
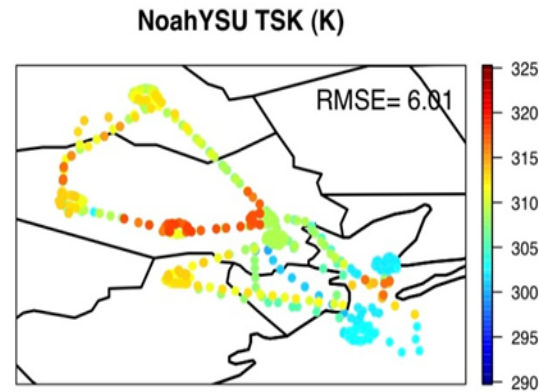
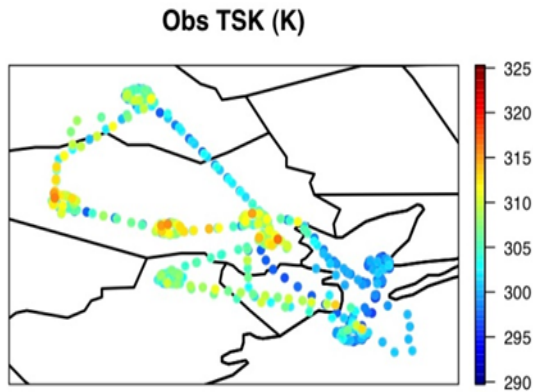


Fig. 12. NASA P3-B flight path on September 25, 2013. The flight path is overlaid on Google Earth images (upper) and 24-category USGS land use data on WRF grid (lower). USGS land use types are specified in Table 2.

NASA P3 has downward looking IR radiometer

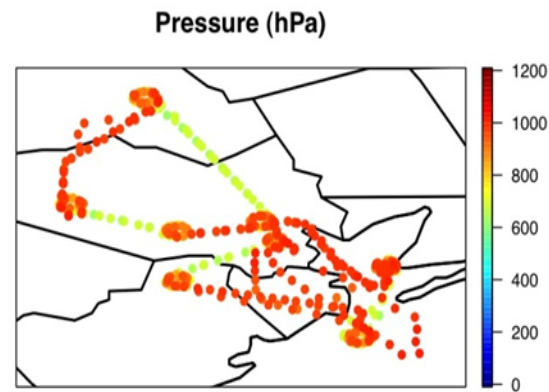
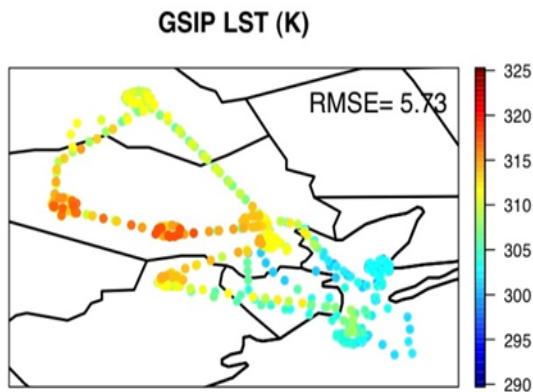
NOAA ARL is making comparisons of modeled and satellite skin temperature with aircraft skin temperature

NASA
Aircraft
Skin
Temperature



WRF Skin
Temperature

Satellite
Skin
Temperature



Schedule:

- 1. Plan First Test of Moisture Skin Temperature Assimilation Technique by July 15**
- 2. Heat Capacity Assimilation in August**

Thanks to Cyril
Durrenberger, Bright
Dornblaser, and Vince
Torres for comments and
improved focus of the
project